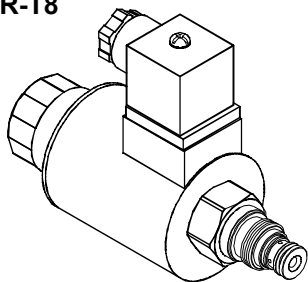
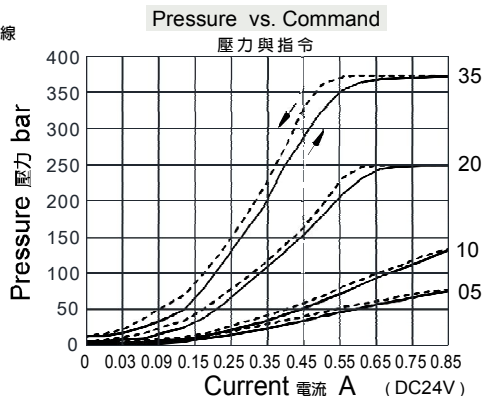
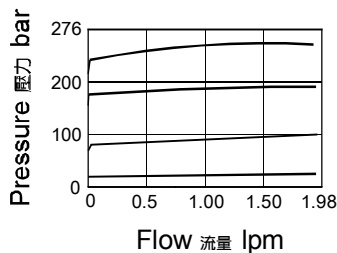


◆ **MODEL 型式**  
EVR-T8



◆ **PERFORMANCE 特性曲線**



◆ **SPECIFICATIONS 規格**

| Model Number<br>型式號碼                 | Maximum Pressure<br>最大壓力 bar | Maximum Flow<br>最大流量 lpm | Rated Current<br>額定電流 mA     | Voltage<br>電壓 VDC | Weight<br>重量 Kg |
|--------------------------------------|------------------------------|--------------------------|------------------------------|-------------------|-----------------|
| EVR-T8                               | 350 (5076psi)                | 1 (0.26 gpm)             | 1300±10%                     | 12                | 0.23 (0.51 lbs) |
|                                      |                              |                          | 650±10%                      | 24                |                 |
| <b>Fluid Type</b> 流體型式               |                              |                          | ISO VG 32, 46, 68            |                   |                 |
| <b>Viscosity</b> 黏性 cSt              |                              |                          | 10~400 (59~1854 SSU)         |                   |                 |
| <b>Operating Temperature</b> 操作溫度 °C |                              |                          | -30~100 (-22~212 °F)         |                   |                 |
| <b>Contamination Level</b> 污染標準      |                              |                          | ISO4406. 20/18/15 NAS1638. 9 |                   |                 |

◆ **HOW TO ORDER 編號說明**

|          |          |          |          |          |
|----------|----------|----------|----------|----------|
| <b>1</b> | <b>2</b> | <b>3</b> | <b>4</b> | <b>5</b> |
| EVR      | T8       | — 10 —   | * —      | 10       |

**1 VALVE SERIES** 系列名稱  
EVR = Proportional Relief Valves  
比例調壓閥

**2 SUBPLATE MOUNTING SIZE** 稱呼口徑  
T8 : T-8A  
Cavity 孔口 : CST-8A  
See Appendices-A 見附錄A  
For Manifold See Appendices-B 油路板見附錄B

**3 ADJUSTMENT PRESSURE** 壓力調整範圍

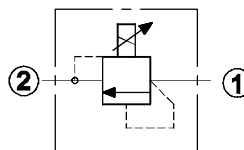
| Code<br>編碼 | Adjustment pressure<br>壓力調整範圍 |
|------------|-------------------------------|
| 05         | 4 ~ 50 (bar)                  |
| 10         | 10 ~ 105 (bar)                |
| 20         | 20 ~ 210 (bar)                |
| 35         | 35 ~ 350 (bar)                |

**4 ADJUSTMENT OPTION** 調整選擇

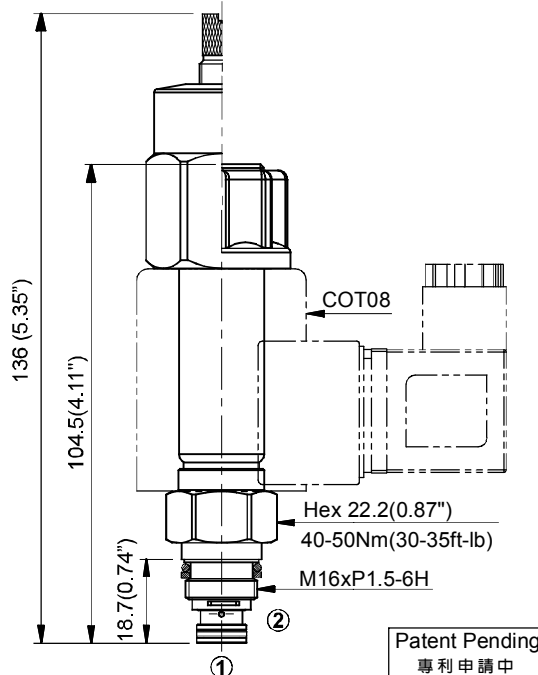
| Non:<br>Standard<br>無記號：標準型 | S:<br>Twist Style Manual<br>Override<br>旋緊型－手動操作復位 | Y:<br>Push Style Manual<br>Override<br>推壓型－手動操作復位 |
|-----------------------------|--|---|
|                             |  |   |

**5 DESIGN NO** 設計編號  
10

◆ **CONTROL PORT(S) 動作形式**



◆ **DIMENSIONS 外型尺寸圖**



◆ **TYPE OF COIL 線圈類型**

Model number 型式編號：COT08  
See Appendices-D 見附錄 D

● Coils must be ordered separately 線圈必須分開訂購