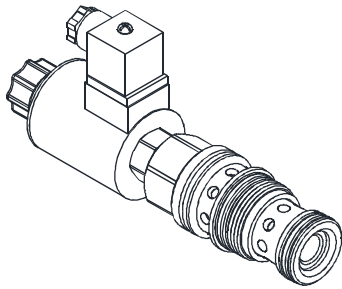


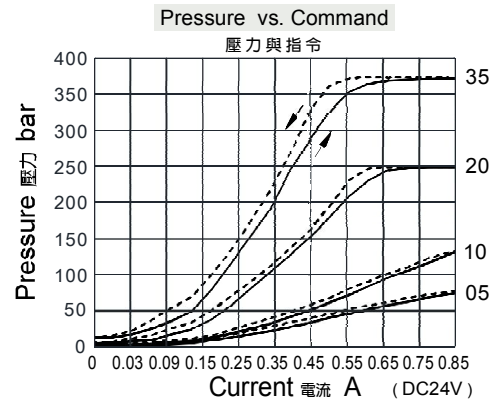
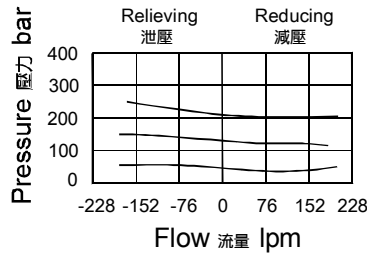
# PROPORTIONAL VALVES 比例閥

**EVRB SERIES PROPORTIONAL BALANCE VALVES (PILOT OPERATED REDUCING/RELIEVING VALVES)** EVRB 系列比例平衡閥(導壓操作減泄壓閥)

## ◆ MODEL 型式 EVRB-06



## ◆ PERFORMANCE 特性曲線



## ◆ DESCRIPTION 說明

This valve is a normally open modulating element that incorporates an integral pilot control cavity. The valve reduces a high primary pressure at the inlet (port 2) to a constant reduced pressure at port 1, with a full flow relief function from port 1 to tank (port 3).  
先導級控制插孔的常開調節元件。減壓閥將進口(口2)高壓主油路壓力調節減至口1所需的減壓壓力，同時具備從口1到油箱(口3)的全流量溢流功能。

## ◆ SPECIFICATIONS 規格

Model Number 型式號碼	Maximum Pressure 最大壓力 bar	Maximum Flow 最大流量 lpm	Rated Current 額定電流 mA	Voltage 電壓 VDC	Weight 重量 Kg
EVRB-06	350 (5076psi)	160 (42.27 gpm)	1300±10%	12	0.72 (1.59 lbs)
			650±10%	24	
<b>Fluid Type</b> 流體型式			ISO VG 32, 46, 68		
<b>Viscosity</b> 黏性 cSt			10~400 (59~1854 SSU)		
<b>Operating Temperature</b> 操作溫度 °C			-30~100 (-22~212°F)		
<b>Contamination Level</b> 污染標準			ISO4406. 20/18/15 NAS1638. 9		

## ◆ HOW TO ORDER 編號說明

<b>1</b>	<b>2</b>	<b>3</b>
EVRB	06	*

### 1 VALVE SERIES 系列名稱

EVRB=Proportional Balance Valves  
(Pilot Operated Reducing/Relieving Valves)  
比例平衡閥(導壓操作減泄壓閥)

### 2 SUBPLATE MOUNTING SIZE 稱呼口徑

06 :T-17A  
Cavity 孔口:CST-17A  
See Appendices-A 見附錄A  
For Manifold See Appendices-B 油路板見附錄B

### 3 ADJUSTMENT PRESSURE 壓力調整範圍

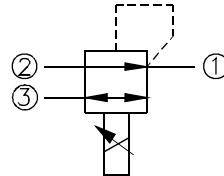
Code 編碼	Adjustment pressure 壓力調整範圍
05	4 ~ 50 (bar)
10	10 ~ 105 (bar)
20	20 ~ 210 (bar)
35	35 ~ 350 (bar)

## ◆ TYPE OF COIL 線圈類型

Model number 型式編號 : COT08  
See Appendices-D  
見附錄 D

- Coils must be ordered separately  
線圈必須分開訂購

## ◆ CONTROL PORT(S) 動作形式



## ◆ DIMENSIONS 外型尺寸圖

