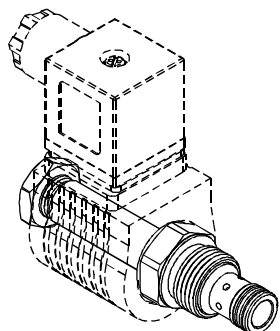


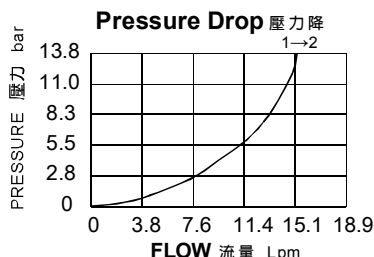
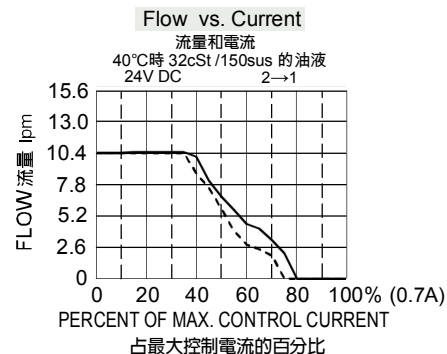
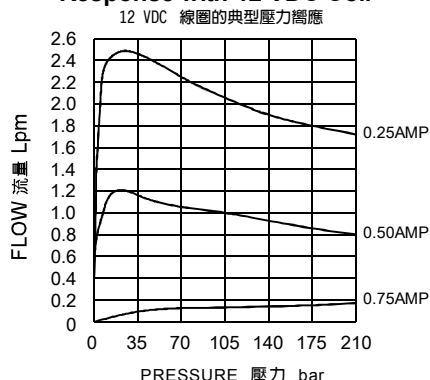
## ◆ MODEL 型式

**EVSV08-25**



## ◆ PERFORMANCE 特性曲線

### Typical Pressure Response with 12 VDC Coil



## ◆ SPECIFICATIONS 規格

Model Number 型式號碼	Maximum Pressure 最大壓力 bar	Maximum Flow 最大流量 lpm	Rated Current 額定電流 mA	Voltage 電壓 VDC	Weight 重量 Kg
EVSV08-25	210 (3046psi)	15 ( 3.96 gpm)	1300±10%	12	0.11 (0.25 lbs)
			650±10%	24	
Fluid Type 流體型式			ISO VG 32 , 46 , 68		
Viscosity 黏性 cSt			10~400 (59~1854 SSU)		
Operating Temperature 操作溫度 °C			-30~100 (-22~212°F)		
Contamination Level 污染標準			ISO4406. 21/19/16 NAS1638,10		

## ◆ HOW TO ORDER 編號說明

<b>1</b>	<b>2</b>	<b>3</b>
EVSV	08	— 25

### 1 VALVE SERIES 系列名稱

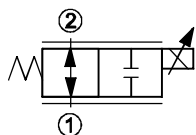
EVSV = Proportional Directional Valves  
(Non Compensated Flow Regulators)  
比例方向閥(非補償流量調節器)

### 2 SUBPLATE MOUNTING SIZE 稱呼口徑

Size:08  
Cavity 孔口 : CS08-2N  
See Appendixes-A 見附錄A  
For Manifold See Appendixes-B 油路板見附錄B

### 3 CONTROL PORT(S) 動作形式

**25:**



## ◆ TYPE OF COIL 線圈類型

Model number 型式編號 : COB08  
See Appendixes-D  
見附錄D

- Coils must be ordered separately  
線圈必須分開訂購

## ◆ DESCRIPTION 說明

A proportional solenoid-operated, 2-way, popper-type, normally open, bi-directional, screw-in hydraulic cartridge valve.  
比例電磁驅動, 2通座閥式, 常開, 雙向液壓螺紋插式閥

## ◆ DIMENSIONS 外型尺寸圖

