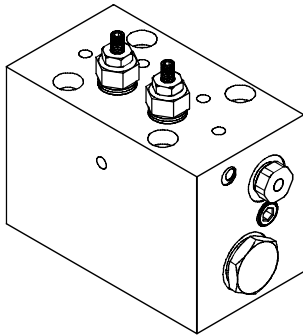


◆ **MODEL** 型 式

VDA-02

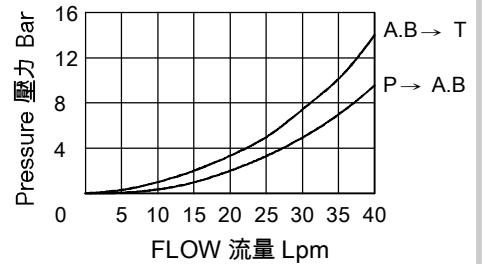


◆ **DESCRIPTION** 說明

These are double-acting valves which automatically change-over the oil flow direction. The motion is completely automatic and normally takes Place when the cylinder reaches its end of stroke. Inversion can also occur in any position whatsoever, as an external resistance acting on the system is created in order to increase the working pressure to reach the setting pressure of the pilot valve. Inversion cycle starts at 90% of the setting pressure of the pilot valves. Setting difference between the valves on A and B ports should not be higher than 30 bar.

這些是自動改變油流向的雙向動作閥門。動作完全自動，通常發生在油缸到達它的動作的末端時，反向也能在任何位置發生，只要產生作用在系統上的外部阻力以增加工作壓力來達到先導閥的壓力設定。反向循環從先導閥壓力設定的90%開始。A和B閥口之間的設定差不應高過30bar。

◆ **PERFORMANCE** 特性曲線



◆ **SPECIFICATIONS** 規 格

Model Number 型式號碼	Operating Pressure 操作壓力 bar	Flow 流量 lpm	Weight 重量 Kg
VDA-02	310 (4496 psi)	35 (9.25 gpm)	1.75 (3.85 lbs)
<b>Fluid Type</b> 流體型式		ISO VG 32, 46, 68	
<b>Viscosity</b> 黏性 cSt		10~400 (59~1854 SSU)	
<b>Operating Temperature</b> 操作溫度 °C		-30~100 (-22~212°F)	
<b>Contamination Level</b> 污染標準		ISO4406. 21/19/16 NAS1638,10	

◆ **HOW TO ORDER** 編號說明

1	2	3
VDA	02	1

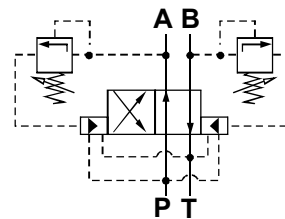
**1 VALVE SERIES** 系列名稱

VDA = AUTOMATIC INVERSION VALVES(PRESSURE)  
自動反向閥(壓力)

**2 SUBPLATE MOUNTING SIZE** 稱呼口徑

02=1/4"(6mm)  
ISO: CETOP3 DIN: NG6 NFPA: D03

◆ **CONTROL PORT(S)** 動作形式



**3 ADJUSTMENT PRESSURE** 壓力調整範圍

Order 編號	Adjustment pressure 壓力調整範圍
1	※ ~ 150 (bar)
2	20 ~ 300 (bar)

◆ **DIMENSIONS**

外型尺寸圖

ISO 4401-AB-03-4-A

