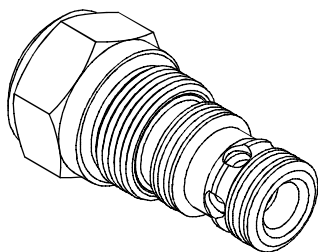
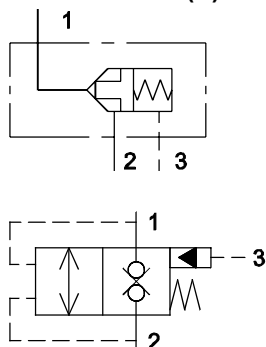


◆ **MODEL 型式**

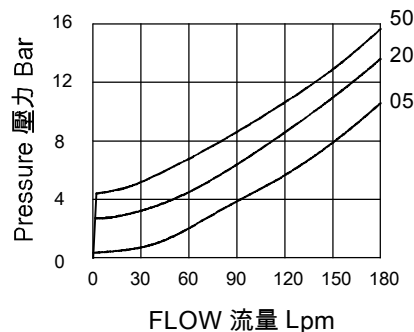
VLC-16



◆ **CONTROL PORT(S) 動作形式**



◆ **PERFORMANCE 特性曲線**



◆ **DESCRIPTION 說明**

A poppet-type, hydraulic directional element, with multi-function potential when used with other directional, pressure, or flow control devices.

Poppet valve which will block ① to ② or ② to ① until pressure at ① or ② exceeds the cumulative pressure at ③ and bias spring. With no pressure at ③, flow will be allowed from ① to ② or ② to ① once the bias spring force is overcome with pressure at ① or ②. When the element is in closed state, the ratio of areas ① and ② is 1:1, and the ratio of areas ① or ② to ③ is 1:2.

錐閥芯液控方向元件；與其他方向、壓力或流量控制元件配合使用時可實現多種功能。

其截止油液從 ① 流向 ② 或從 ② 流向 ①，直到 ① 處或 ② 處的壓力超過 ③ 處的總壓力和彈簧預壓力之和時，閥芯才打開。當 ③ 處無壓力時，一旦 ① 處或 ② 處的壓力超過彈簧預壓力，油液將從 ① 流向 ② 或從 ② 流向 ①，當元件處於閉合狀態時，① 和 ② 的面積比為 1:1，① 或 ② 與 ③ 的面積比為 1:2。

◆ **SPECIFICATIONS 規格**

Model Number 型式號碼	Operating Pressure 操作壓力 bar	Ratio Of Poppet Area 面積比	Flow 流量 lpm	Weight 重量 Kg
VLC-16	350 (5076psi)	2 : 1	190 (50.19 gpm)	0.4 (0.88 lbs)
Fluid Type 流體型式		ISO VG 32 , 46 , 68		
Viscosity 黏性 cSt		10~400 (59~1854 SSU)		
Operating Temperature 操作溫度 °C		-15~70 (-5~158 °F)		
Contamination Level 污染標準		ISO4406. 21/19/16 NAS1638,10		

◆ **HOW TO ORDER 編號說明**

1	2	3
VLC	16	50

◆ **DIMENSIONS 外型尺寸圖**

1 VALVE SERIES 系列名稱

VLC= CARTRIDGE LOGIC VALVES
插入式邏輯閥

2 PORTING 閥口

Size: 16
Cavity 孔口: CS16-3S
See Page Appendixes-A_003
見附錄A_003 頁面

3 CRACKING PRESSURE 彈簧壓力

05 : 0.5 bar (7psi)
20 : 2 bar (29psi)
50 : 5.5 bar (80psi)

