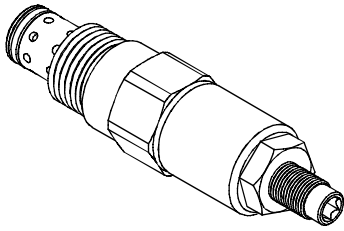


◆ MODEL 型式 VRD10

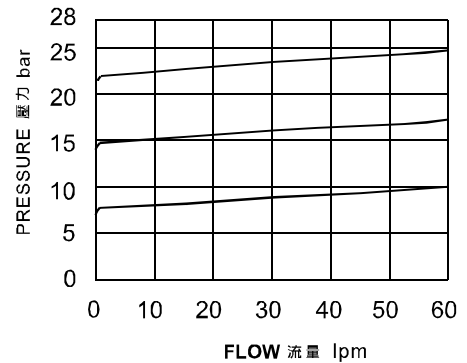


◆ DESCRIPTION 說明

Direct-acting, differential area, poppet-type, bi-directional relief valve.
This is a direct-acting, dual cross-over relief valve in a single cartridge format. When pressure at either port exceeds the nominal setting value, flow will be transmitted to the opposite port. Back pressure at either port will affect the nominal setting of the opposite port on a 1:1 basis. For correlation purposes, pre-set value will be measured at port 2. Pressure at port 1 will not exceed ± 10 bar from the port 2 value.

直動型, 面插式, 座閥式雙向溢流閥。
單一插件形式的直動型雙向交叉溢流閥。當任一油口的壓力超過標稱設定值時, 油液將輸送到相反的油口。任一油口的背壓將 1:1 疊加在相反油口的標稱設定值上。因為對稱, 預設值將在油口2測定, 油口1的壓力同油口2相差不超過 ± 10 bar。

◆ PERFORMANCE 特性曲線



◆ SPECIFICATIONS 規格

Model Number 型式號碼	Operating Pressure 操作壓力 bar	Flow 流量 lpm	Weight 重量 Kg
VRD10	340 (4931psi)	60 (15.85 gpm)	0.27 (0.6 lbs)
Fluid Type 流體型式		ISO VG 32, 46, 68	
Viscosity 黏性 cSt		10~400 (59~1854 SSU)	
Operating Temperature 操作溫度 °C		-15~70 (-5~158°F)	
Contamination Level 污染標準		ISO4406. 21/19/16 NAS1638,10	

◆ HOW TO ORDER 編號說明

1	2	3	4	5
VRD	10	*	*	10

1 VALVE SERIES 系列名稱

VRD = CARTRIDGE BRAKE VALVES
插入式煞車閥

2 SUBPLATE MOUNTING SIZE 稱呼口徑

Size : 10
Cavity 孔口: CS10-2N
See Page Appendixes-A_001
見附錄A_001 頁面

3 ADJUSTMENT PRESSURE 壓力調整範圍

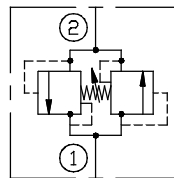
Order 編號	Adjustment pressure 壓力調整範圍
16	14 ~ 168 (bar)
20	160 ~ 210 (bar)

4 ADJUSTMENT OPTION 調整選擇

NONE	NONE: TOOL ADJUST 無: 工具調整式	
K	K: HAND-BAR ADJUST K: 手把調整式	

5 DESIGN NO 設計編號

◆ CONTROL PORT(S) 動作形式



◆ DIMENSIONS 外型尺寸圖

