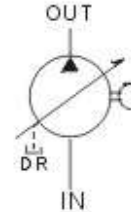




Series:PV2R



◆ FEATURES

- Large flow rate and high pressure with more compact size of the pump on the market.
- Maximum working pressure up to 210/cm² (3000 p. s. i.).
- Either inlet or outlet ports can be chosen for easier installation and maintenance.
- Rotating directions (clockwise or anticlockwise) can also be free to select.

- 特點:
- 市面上同系列中, 具有體積小、大流量、高壓力的特點。
- 最高使用壓力210kg/cm²(3000 p. s. i.)
- 出、入口口的組立方向可任意選擇、安裝、維修容易。
- 正逆轉方向、改變簡單。

◆ SPECIFICATIONS 規格

MODEL CODING 型式號碼	DELIVERY CAPACITY (CC/REV) 吐出容量				MAX. PRESSURE kgf/cm ² 最高壓力	RATED SPEED 額定速度	
	SPEED OF ROTATION (rpm) 迴轉速					MAX. (最高)	MIN. (最低)
	1000	1200	1500	1800			
PV2R1-06	6.2	7.4	9.3	11.2	210	1800	1200
PV2R1-08	8.1	9.7	12.1	14.6	210	1800	950
PV2R1-11	11.2	13.4	16.8	20.1	210	1800	950
PV2R1-14	13.6	17.1	21.5	25.7	210	1800	950
PV2R1-17	16.6	20.5	25.6	30.7	210	1800	950
PV2R1-19	18.6	23.0	28.8	34.5	210	1800	950
PV2R1-23	22.7	27.9	34.9	41.9	210	1800	950
PV2R1-25	25.3	31.3	39.1	46.9	175	1800	950
PV2R1-31	31.0	37.3	46.6	—	175	1500	950
PV2R2-26	26.2	31.4	39.3	47.1	210	1800	950
PV2R2-33	33.0	38.5	48.1	57.7	210	1800	950
PV2R2-38	38.2	45.8	57.3	68.7	210	1800	950
PV2R2-41	41.3	49.2	61.5	73.8	210	1800	950
PV2R2-47	47.2	57.8	71.4	86.7	210	1800	950
PV2R2-53	52.3	62.7	78.4	94.1	210	1800	950
PV2R2-59	60.2	72.7	90.3	108.3	210	1800	950
PV2R2-65	65.3	78.3	97.9	117.5	210	1800	950
PV2R3-60	60.3	72.3	90.4	108.5	210	1800	900
PV2R3-66	66.4	79.6	99.6	119.5	210	1800	900
PV2R3-76	76.3	91.5	114.4	137.3	210	1800	900
PV2R3-82	82.2	98.6	123.3	147.5	210	1800	900
PV2R3-88	88.3	105.9	132.4	158.9	210	1800	900
PV2R3-94	93.6	113.4	141.7	170.1	210	1800	900
PV2R3-108	108.2	129.8	162.3	194.4	210	1800	900
PV2R3-116	115.6	139.3	174.1	208.9	175	1800	900
PV2R3-126	125.6	149.5	186.9	226	175	1500	900