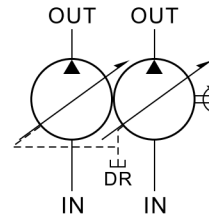


DOUBLE VARIABLE VANE PUMPS

雙連變量泵

PUMPS



◆ FEATURES

- Double variable displacement vane pumps built into one single body, with a common driving shaft enable driving two independent pumps to produce two branches of oil flow system which avoid to interfere each other.
- Requires only one single-shaft, uses single electric motor.
- Space saving for easier installation and maintenance.
- Closed circuit to achieve lower level.

- 特點:
- 雙連變量邦浦可以組合成二個獨立而分離的油路系統，避免相互牽制。
- 共用同一軸心，使用同一馬達。
- 減少使用空間，配管維修容易。
- 採用密閉迴路可以降低噪音。

◆ SPECIFICATIONS 規格

Model 產品型號	MAX. PRESSURE kgf/cm ² (psi) 最高壓力	Displacement 吐出量 l/min		ADJUSTING PRESSURE RANGE kgf/cm ² 壓力調整範圍		SPEED (rpm) 速度(迴轉數/每分鐘)		WEIGHT 重量 kgf(lbs)
		SHAFT SIDE PUMP 軸端邦浦	COVER SIDE PUMP 蓋端邦浦	SHAFT SIDE PUMP 軸端邦浦	COVER SIDE PUMP 蓋端邦浦	MAX. (最高)	MIN. (最低)	
VPCC-F12※-12※-10	(1000) 70	12	12	A : 8~18 kgf/cm ² (114~257psi)		1800	800	9.5 (20.9)
VPCC-F15※-15※-10		15	15	B : 15~35 kgf/cm ² (214~500psi)		1800	800	
VPCC-F20※-20※-10		20	20	C : 30~55 kgf/cm ² (428~785psi)		1800	800	
VPCC-F25※-25※-10	70 (1000)	25	25	D : 50~70 kgf/cm ² (714~1000psi)		1800	800	16(35.2)
VPCC-F30※-30※-10		30	30			1800	800	
VPCC-F40※-40※-10		40	40			1800	800	

● Design and specifications are subject to change without prior notice. 本表數據若有變更，恕不另行通知。

◆ HOW TO ORDER 編號說明

1	2	3	4	5	6	7
VPCC	— F	12	A	— 12	A	— 10

1 MODEL NUMBER 型式號碼
Double variable displacement 雙連型式

2 MOUNTING 固定方式
Flange Type 法蘭型

3 SHAFT END PUMP (l/min)
軸端邦浦容量

4 SHAFT END PUMP PRESSURE(kgf/cm²)
See Specifications
軸端邦浦壓力壓力調整範圍參照上表規格

5 COVER DELIVERY SIDE OF PUMP(l/min)
See Specifications 蓋端邦浦容量參照上表規格

6 SECONDARY PUMP PRESSURE(kgf/cm²)
See Specifications
蓋端邦浦容量壓力調整範圍參照上表規格

7 DESIGN NO 設計編號

DOUBLE VARIABLE VANE PUMPS

雙連變量泵

PUMPS

Double variable vane pumps 雙連變量邦浦

◆ DIMENSIONS 外型尺寸圖

