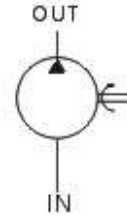


FIXED DISPLACEMENT VANE PUMPS

固定容置齒輪泵

PUMPS



◆ FEATURES

- These pumps are designed for low noise level and high volume efficiency.
- Smooth running high stability and durability.
- Inlet resistances are particularly considered in input-port design.
- Maximum working pressure up to 70kgf/cm² (1000psi).

- 低噪音。
- 此類泵是低噪音、高容積效率設計。
- 運轉圓滑、穩定性高、壽命長。
- 吸入口設計有特殊考慮到其吸入阻抗。
- 最高工作壓力70kgf/cm² (1000psi)。

◆ SPECIFICATIONS 規格

SERIES:VPNC

MODEL CODING 型式號碼	DELIVERY CAPACITY (CC/REV) 吐出容量				ALLOWABLE ROTATIONAL SPEED (rpm) 迴轉速		MAX. PRESSURE kgf/cm ² 最高壓力	WEIGHT kgf(lbs) 重量	
	SPEED OF ROTATION (rpm) 迴轉速				MAX. (最高)	MIN. (最低)		FOOT TYPE 腳座型	FLANGE TYPE 法蘭型
	1000	1200	1500	1800					
VPNC-07	—	9.0	11.2	13.5	1800	1200	70	10.5	9.5
VPNC-12	12	14.4	18.0	21.6	1800	950	70	10.5	9.5
VPNC-14	14.6	17.5	21.7	26.1	1800	950	70	10.5	9.5
VPNC-17	17	20.3	25.5	31.5	1800	950	70	10.5	9.5
VPNC-20	20.1	24.1	30.2	36	1800	950	70	10.5	9.5
VPNC-23	23	27.6	34.5	41.4	1800	950	70	10.5	9.5
VPNC-26	26.2	31.4	39.3	47.2	1800	950	70	10.5	9.5
VPNC-30	30	36	44.5	53	1800	950	70	10.5	9.5
VPNC-36	36.2	43.4	54.3	64	1800	950	70	10.5	9.5
VPNC-39	39	46.5	58.5	70	1800	950	70	10.5	9.5
VPNC-43	43	51.6	—	—	1200	950	35	10.5	9.5

SERIES:VPNE

MODEL CODING 型式號碼	DELIVERY CAPACITY (CC/REV) 吐出容量				ALLOWABLE ROTATIONAL SPEED (rpm) 迴轉速		MAX. PRESSURE kgf/cm ² 最高壓力	WEIGHT kgf(lbs) 重量	
	SPEED OF ROTATION (rpm) 迴轉速				MAX. (最高)	MIN. (最低)		FOOT TYPE 腳座型	FLANGE TYPE 法蘭型
	1000	1200	1500	1800					
VPNE-48	48.3	57.9	72.4	86.9	1800	900	70	25	25
VPNE-61	61.5	73.8	92.2	110.7	1800	900	70	25	25
VPNE-75	75.5	90.6	113.2	135.9	1800	900	70	25	25
VPNE-94	94.2	113.0	141.3	169.5	1800	900	70	25	25
VPNE-116	116.3	139.6	174.0	—	1200	900	70	25	25

● Design and specifications are subject to change without prior notice. 本表數據若有變更，恕不另行通知。

● Customer's design are available. 歡迎客戶提供設計。