

◆ MODEL 型號



EFR-03G

◆ SPECIFICATION 性能表

MODEL NO. 型號	PRESSURE 壓力 (bar)	FLOW-RATE 流量 (l/min)	CONTROL STYLE 控制型式	RATED CURRENT 額定電流 (mA)	COIL RESISTANCE 線圈電阻 (Ω)
EFR-03G-20	210	125	Pressure control 壓力控制	800	10
					40
EFR-06G-20	210	250	Flow control 流量控制	800	10
					40

Cautional in Application:

● Place for installation

The place of bleeder can be adjusted freely and put the direction upside available to eliminate the air in pipe passage and valve.

● Drain

The return oil pipe passage should be avoided having Flowed Friction Condition but reduce back pressure as possible.

● Hand-adjusting (pressure, flow) Screw (bar)

When electric control is disorder and need to supply pressure occasionally, then just to return the hand-adjusting pressure screw(bar) in clockwise direction. Restore it to the origin at usual time

● Elimination of Air (Air Vent)

Turn the bleeder on the upword position, then open the screw(adjust system pressure to 30kgf/cm²) eliminating the air, then lock tightly the screw when there is no bubble but full of oil in valve.

● Highest Safety Pressure Set

It is demanded upon actual oil pump disorption and actual use pressure just fine when oil pump is less than 100 l/min, super add 15kgf/cm² is recommended.

使用上注意事項

● 安裝位置

放氣孔位置可自由調整，請將其方向朝上，以方便排出管系及閥內之空氣。

● 回油管裝

回油管系儘可能避免有回流現象，儘可能減少背壓。

● 手動調整 (壓力、流量) 螺絲

當電氣故障時，隨時應準使用，平時則應歸原位。

● 空氣排除

將調整螺絲上的放氣孔螺絲打開，請將系統壓力調在 30kgf/cm² 讓空氣排出，當閥內充滿油而不見再有氣泡後，將螺絲再鎖緊。

● 最高安全壓力設定

依實際油泵吐出量及實際使用壓力而決定，通常在油泵 100 l/min 以下，增加 15kgf/cm² 即可。

◆ HOW TO ORDER 編號說明

1	2	3	4	5
EFR	03	G	2	20

1 MODEL 產品型號

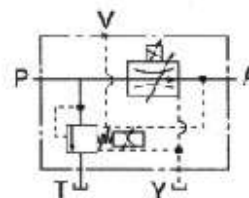
2 SUBPLATE MOUNTING SIZE: 螺絲口徑

03 = 3/8" (9mm)	06 = 3/4" (19mm)
ISO CETOP5	ISO CETOP8
DIN NG 10	DIN NG 25
NFPA D05	NFPA D08

3 CONNECTING TYPE 連接型式

G: TYPE: BASEPLATE MOUNTING TYPE (板式連接)

◆ CONTROL PORT(S) 動作形式



4 PRESSURE ADJUSTMENT 壓力調整範圍

Blank: without Pilot & pres. adj.

空白: 無引調調整

2: 140 bar

3: 250 bar

5 DESIGN NO 設計編號