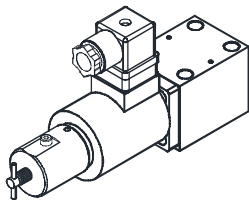


PROPORTIONAL ELECTRO-HYDRAULIC PILOT RELIEF VALVES ER SERIES

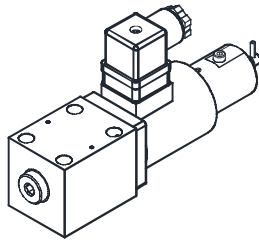
ER 油壓電磁比例式引導調壓閥

MODEL 型式

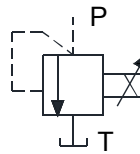
ER-01



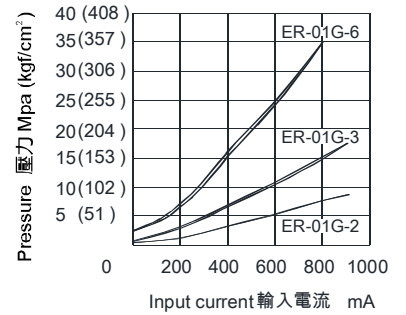
ER-01-L



CONTROL PORT(S) 動作形式



PERFORMANCE 特性曲線



SPECIFICATIONS 規格

Model Number 型式號碼	Maximum Pressure 最大壓力 bar	Rated Flow Rate 額定流量 Lpm	Rated Current 額定電流 mA	Coil Resistance 線圈阻抗 Ω	Hysteresis 磁滯性 %	Weight 重量 Kg
ER-01	350(5076 psi)	1.2	800	20 (20 C)°	3 max.以下	1.6(3.5 lbs)
ER-01-L						
Fluid Type 流體型式				ISO VG 32, 46, 68		
Viscosity 黏性 cSt				10~400 (59~1854 SSU)		
Operating Temperature 操作溫度 °C				-15~70 (-5~158 °F)		
Contamination Level 污染標準				ISO4406. 21/19/16 NAS1638,10		

All screws with metric measure, if require inch measure, please contact us. 所附螺絲皆為公制標準規格品, 若需英制螺絲請另外備註說明。

HOW TO ORDER 編號說明



1 VALVE SERIES 系列名稱

ER = ELECTRO-HYDRAULIC PROPORTIONAL PILOT RELIEF VALVE 電磁比例液控調壓閥

2 SUBPLATE MOUNTING SIZE: 稱呼口徑

01 = 1/4"(6mm)
ISO CETOP3
DIN NG 6
NFPA D03

3 CONNECTING TYPE 連接型式

G:TYPE:BASEPLATE MOUNTING TYPE (板式連接)

4 ADJUSTMENT PRESSURE 壓力調整範圍

Order 編號	Adjustment pressure 壓力調整範圍
1	3.1 ~ 25 (bar)
2	7.1 ~ 70 (bar)
3	10 ~ 140 (bar)
5	15.3 ~ 280 (bar)
6	20 ~ 350 (bar)

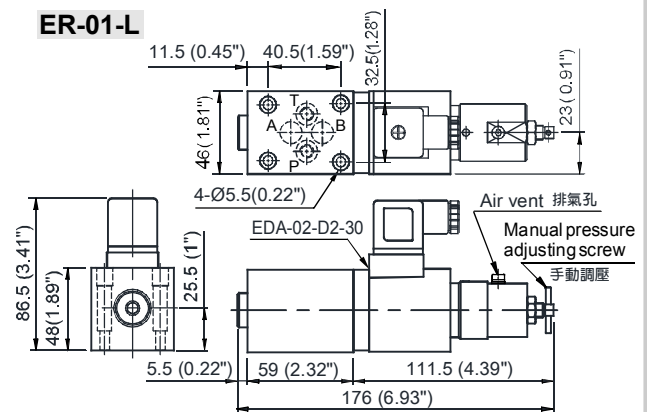
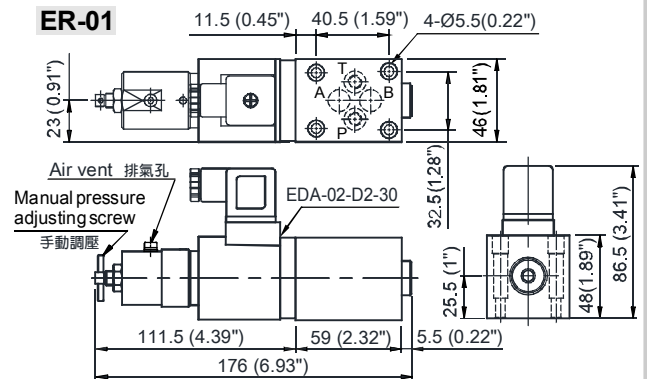
5 TYPE 型式

None : Standard Assemblage 無記號 : 標準型配置
L : Reverse Assemblage L : 反向型配置

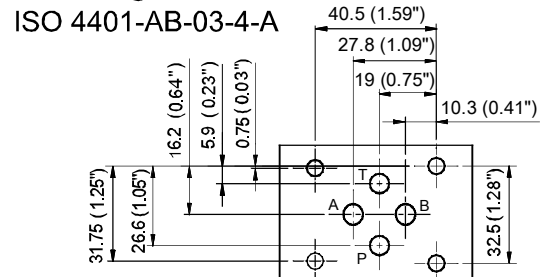
- L type (reverse configuration) is not a standard assemblage, the mounting ports are the same as EDG-01. L型(反向型配置)不是標準配置,與EDG-01安裝孔口相同。
- L type is only available in port type 01. 只有口徑01型有L型

6 DESIGE NO 設計編號

DIMENSIONS 外型尺寸圖



Mounting Interface 基座尺寸圖



VALVES