

PROPORTIONAL ELECTRO-HYDRAULIC PILOT RELIEF VALVES ER SERIES

ER 油壓電磁比例式引導調壓閥

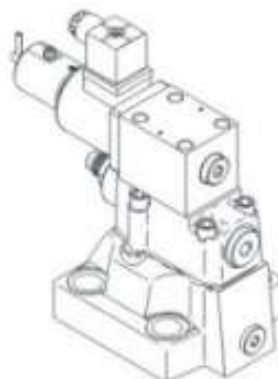
VALVES

◆ MODEL 型 式

ER-03 / 06 / 10G



EDB-03 06 10G



◆ SPECIFICATIONS 規 格

Model Number 型式號碼	Pressure 壓力 bar	Flow 流量 Lpm	Rated Current 額定電流(A)	Coil Resistance 線圈阻值 Ω	Hysteresis 滯後性 %	Weight 重量 kg
ER-03G	250(3625 psi)	100	800	20 (20 C)*	3 max.以下	3.4(7.5 lbs)
EDB-03G	350(5076 psi)	250	800	20 (20 C)*	3 max.以下	3.4(7.5 lbs)
ER-06G	250(3625 psi)	200	800	20 (20 C)*	3 max.以下	5(11.0 lbs)
EDB-06G	350(5076 psi)	500	800	20 (20 C)*	3 max.以下	5(11.0 lbs)
ER-10G	250(3625 pai)	400	800	20 (20 C)*	3 max.以下	5.9(13.0 lbs)
EDB-10G	350(5076 psi)	650	800	20 (20 C)*	3 max.以下	5.9(13.0 lbs)
Fluid Type 液體型式			ISO VG 32 , 46 , 68			
Viscosity 黏性 cSt			10~400 (59~1854 SSU)			
Operating Temperature 操作溫度 °C			-15~70 (-5~158 °F)			
Contamination Level 污染標準			ISO4406: 21/19/16 NAS1638,10			

● All screws with metric measure , if require inch measure , please contact us.
所有螺絲皆為公制標準規格品。若需英制螺絲請與我們聯絡說明。

◆ HOW TO ORDER 編號說明

1	2	3	4	5
ER	03	G	2	10

1 VALVE SERIES 系列名稱

ER
EDB

2 SUBPLATE MOUNTING SIZE: 基板口徑

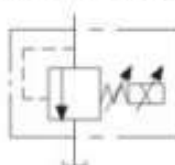
03 = 3/8"(9mm) 06 = 3/4"(19mm)
ISO CETOP5 ISO CETOP8
DIN NG 10 DIN NG 25
NFPA D05 NFPA D08

10 = 1 1/4"(31.8mm)
ISO CETOP10
DIN NG 32
NFPA D10

3 CONNECTING TYPE 連接型式

G:TYPE-BASEPLATE MOUNTING TYPE
(板式安裝)

◆ CONTROL PORT(S) 動作形式



4 PRESSURE ADJUSTMENT 壓力調整範圍

ER		EDB	
Order 編號	Adjustment pressure 壓力調整範圍	Order 編號	Adjustment pressure 壓力調整範圍
1	3 ~ 25 (bar)	1	3 ~ 25 (bar)
2	7 ~ 70 (bar)	2	7 ~ 70 (bar)
3	10 ~ 140 (bar)	3	10 ~ 140 (bar)
5	16 ~ 280 (bar)	5	16 ~ 280 (bar)
		6	20 ~ 350 (bar)

5 DESIGN NO 設計編號